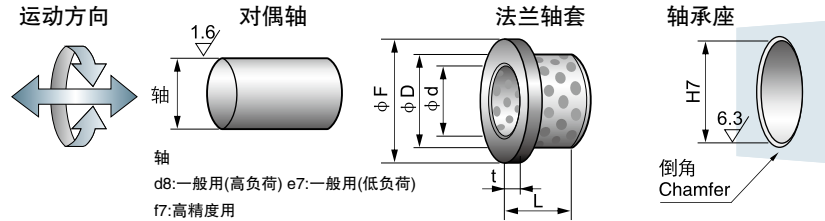




请从适用的内径、外径、长度中选择零件号  
(例)内径50mm、长度30mm的情况下

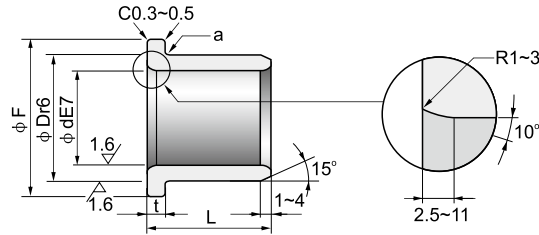
### NTB-50F - 5030

请指定上述零件号



内径		外径		法兰		长度 L <sup>-0.1</sup> <sub>-0.3</sub>									
∅ d		∅ D		∅ F	t	10	12	15	17	18	20	23	25		
6	+0.032 +0.020	10	+0.028 +0.019	16	2	0 -0.1	0610	0612							
8	+0.040 +0.025	12	+0.034 +0.023	20	"	"	0810	0812	0815						
10	-	14	-	22	"	"	1010	1012	1015	1017					
12	+0.050 +0.032	18	-	25	3	"	1210	1212	1215		1220		1225		
13	-	19	+0.041 +0.028	26	"	"	1310	1312	1315		1320		1325		
14	-	20	-	27	"	"			1415		1420		1425		
15	-	21	-	28	"	"	1510	1512	1515		1520		1525		
16	-	22	-	29	"	"		1612	1615		1618	1620	1623	1625	
18	-	24	-	32	"	"			1815		1820		1825		
20	+0.061 +0.040	30	-	40	5	"			2015		2020		2025		
25	-	35	+0.050 +0.034	45	"	"			2515		2520		2525		
30	-	40	-	50	"	"					3020		3025		
31.5	+0.075 +0.050	"	-	"	"	"					3120				
35	-	45	-	60	"	"					3520		3525		
40	-	50	-	65	"	"					4020		4025		
45	-	55	+0.060 +0.041	70	"	"									
50	-	60	-	75	"	"									
55	+0.090 +0.060	65	-	80	"	"									
60	-	75	+0.062 +0.043	90	7.5	"									
63	-	"	-	85	"	"									
65	-	80	-	95	"	"									
70	-	85	+0.073 +0.051	105	"	"									
75	-	90	-	110	"	"									
80	-	100	-	120	10	"									
90	+0.107 +0.072	110	+0.076 +0.054	130	"	"									
100	-	120	-	150	"	"									
120	-	140	+0.088 +0.063	170	"	"									
130	+0.125 +0.085	150	+0.090 +0.065	180	"	"									
140	-	160	-	190	"	"									
150	-	170	+0.093 +0.068	200	"	"									
160	-	180	-	210	"	"									

注：本公司可按客户需求，生产非标产品。 Note: we can produce as per your drawings.



a:凸缘下端倒角(mm)  
Chamfered at the lower end

d	~ 1.6	~ 55	~ 160
a	R0.3	R0.5	R1

- 能使用与旋转，摇动运动以及往复运动。
- 在法兰部分由于没有镶嵌润滑剂，不能承受轴向负重。
- 请避免在海水中使用。
- 内径31.5mm·63mm是油压气缸中间轴劲套上使用的产品。

长度 L <sup>-0.1</sup> / <sub>-0.3</sub>									压入后 内径公差	内径 ∅ d
30	35	40	50	60	67.5	80	100	120		
									+0.016	6
									+0.004	8
									+0.021	10
									+0.006	12
									-	13
1230									+0.031	14
1330									+0.013	15
									+0.028	16
									+0.008	18
									-	20
1530									-	25
1630	1635	1640							+0.037	30
1830	1835	1840							+0.016	31.5
2030	2035	2040							+0.032	35
2530	2535	2540	2550						+0.011	40
3030	3035	3040	3050						-	45
3130	3135	3140							+0.046	50
3530	3535	3540	3550						+0.021	55
4030	4035	4040	4050						-	60
4530	4535	4540	4550	4560					+0.040	63
5030	5035	5040	5050	5060					+0.015	65
		5540		5560					+0.055	70
		6040	6050	6060		6080			+0.025	75
						6367			+0.053	80
									+0.023	85
				6560					-	90
			7050			7080			+0.046	100
				7560					+0.016	105
				8060		8080	80100		-	110
				9060		9080			+0.060	120
						10080	100100		+0.025	130
						12080	120100		-	140
						13080	130100		+0.052	150
						14080	140100		+0.017	160
								150100	+0.068	170
								150120	+0.028	180
								160100	-	190
								160120	+0.065	200
									+0.025	210
									-	220