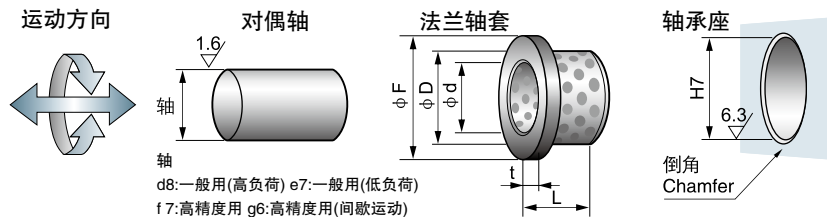




请从适用的内径、外径、长度中选择零件号
(例)内径50mm、长度30mm的情况下

NTB-50FG- 5030

请指定上述零件号

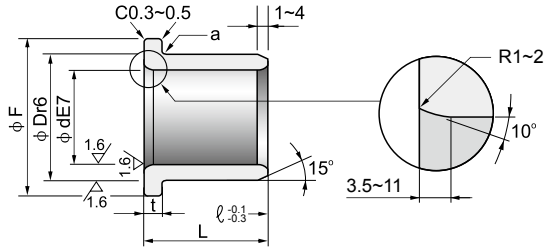


内径		外径		法兰				长度 L					
d∅	公差	D∅	公差	F∅	公差	t	公差	11	13	18	20	23	25
6	+0.032 +0.020	10	+0.028 +0.019	20	0 -0.3	3	0 -0.1	0611					
8	+0.040 +0.025	12	+0.034 +0.023	25	"	"	"		0813				
10	"	14	"	"	"	"	"		1013	1018			
12	+0.050 +0.032	18	"	30	"	3	"	1211		1218		1223	
13	"	19	+0.041 +0.028	"	"	"	"		1313	1318		1323	
15	"	21	"	35	"	"	"		1513	1518		1523	
16	"	22	"	"	"	"	"		1613	1618		1623	
18	"	24	"	40	"	"	"			1818		1823	
20	+0.061 +0.040	28	"	45	"	5	"				2020		2025
25	"	33	+0.050 +0.034	50	"	"	"				2520		2525
30	"	38	"	55	"	"	"				3020		3025
35	+0.075 +0.050	44	"	65	"	"	"				3520		3525
40	"	50	"	70	"	7	"						
50	"	62	+0.060 +0.041	90	"	8	0 -0.04						
60	+0.090 +0.060	74	+0.062 +0.043	110	"	"	"						
70	"	85	+0.073 +0.051	120	"	10	"						
80	"	96	"	140	"	"	"						

注: 本公司可以按客户需求, 生产非标产品。Note: we can produce as per your drawings.

NTB-50FG

法兰轴套 Flanged Bushes



- 能在旋转，摇动以及往复运动中使用。
- 同一个轴套能同时承受径向与轴向负荷。
- 法兰厚度的高精度化能使机械精度提高。

a:凸缘下端倒角(mm)
Chamfered at the lower end

d	~ 50	60 ~
a	R0.5	R1

长度 L												压入后 内径公差	内径 ϕd	
27	35	37	38	47	48	50	58	60	68	80	90			
													+0.016 +0.004	6
													+0.021 +0.006	8
													"	10
													+0.031 +0.013	12
													+0.026 +0.008	13
													"	15
													"	16
													"	18
													+0.037 +0.016	20
													+0.032 +0.011	25
	3035												"	30
	3535												+0.046 +0.021	35
4027		4037		4047									"	40
			5038		5048		5058						+0.040 +0.015	50
			6038		6048		6058		6068				+0.053 +0.023	60
						7050				7080			+0.046 +0.016	70
								8060			8090		"	80

※压入后内径公差为参考值。